

HOUSTON GALVESTON REGIONAL PLAN

**OUR**  
REGION VISION FUTURE



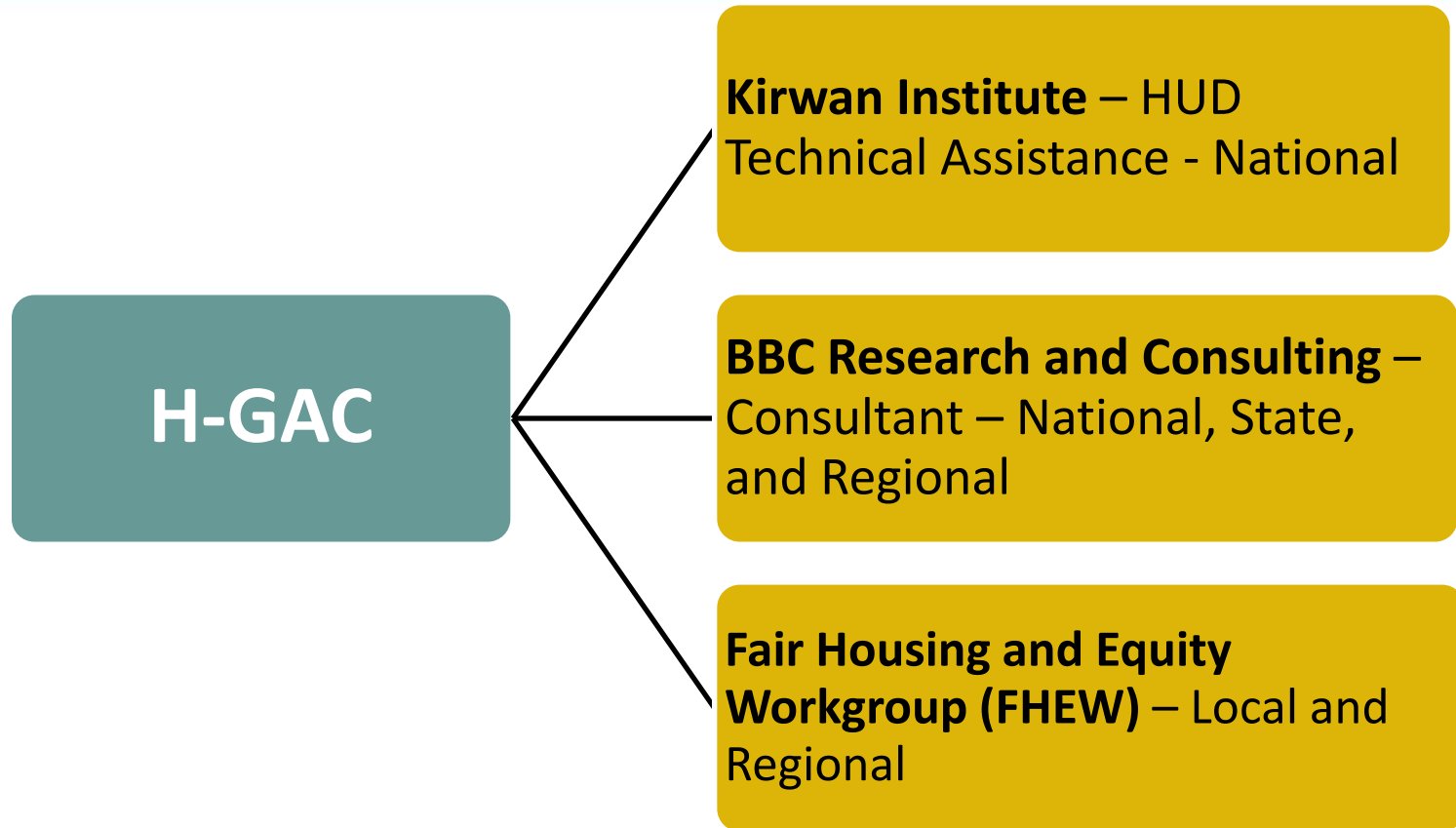
Fair Housing and Equity Assessment Update

**RPSD Coordinating Committee**

**April 23, 2013**



# FHEA Roles



# FHEW Background

## Fair Housing and Equity Workgroup Organizations

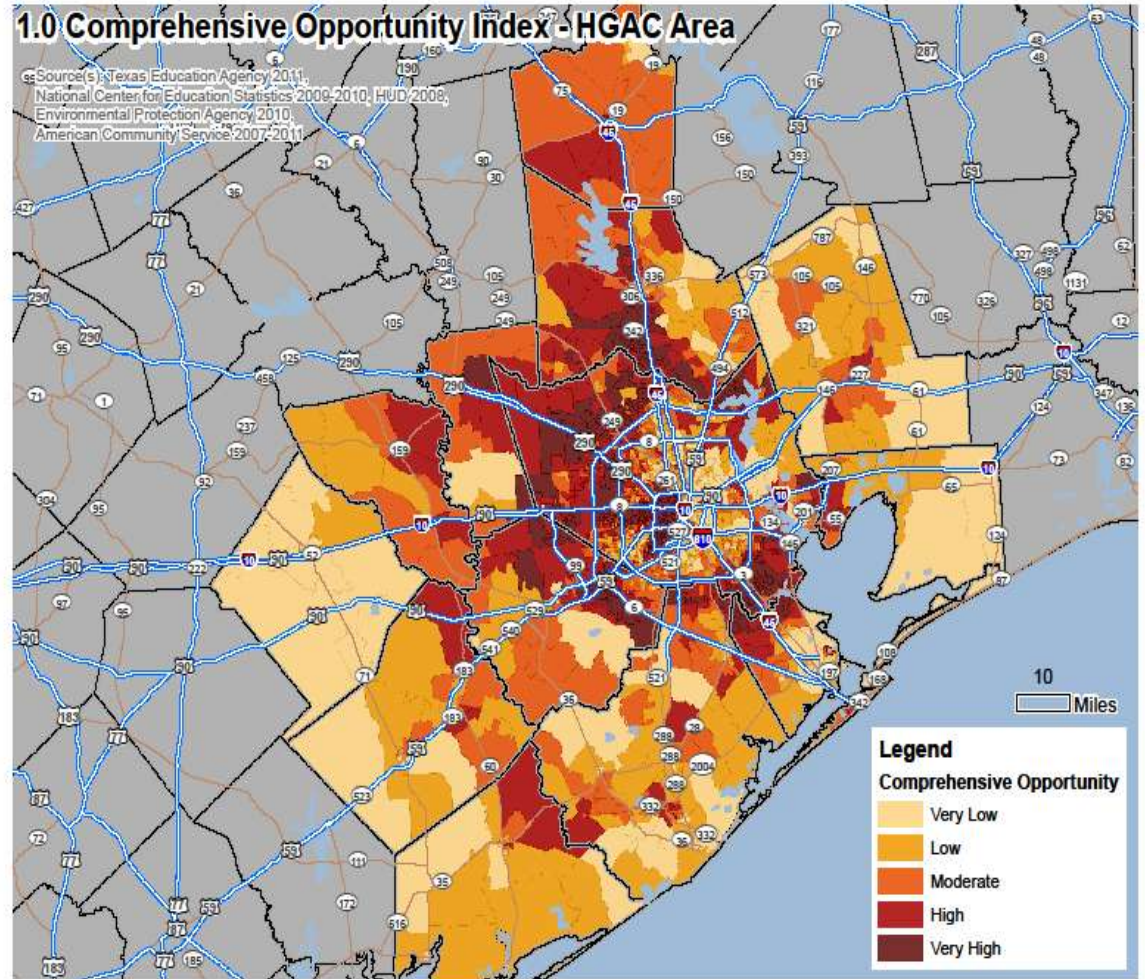
Boat People SOS Houston	Gulf Coast Interfaith
Center for Housing and Urban Development at Texas A&M	Coalition for the Homeless Houston/Harris County
Texas Organizing Project	University of Texas Medical Branch
City of Houston	City of Huntsville
League of United Latin American Citizens, Brazosport Council	National Association for the Advancement of Colored People, Missouri City and Vicinity Branch Unit
Houston-Galveston Area Council	United Way of Greater Houston
Fort Bend County	Montgomery County
Harris County	Palacios Housing Authority
Texas Low Income Housing Information Service	Metropolitan Transit Authority of Harris County
Greater Houston Fair Housing Center	Gulf Coast Economic Development District



# HUD National

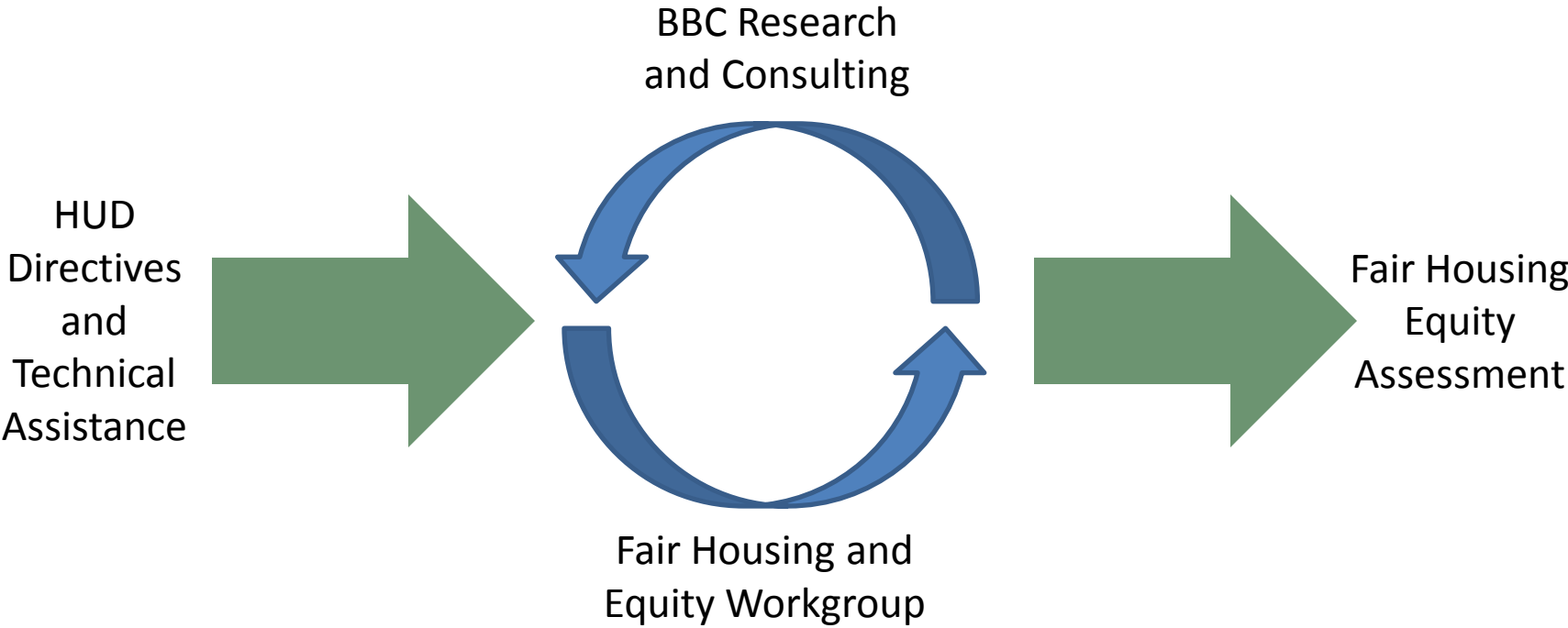
## Opportunity Mapping:

- Education
- Neighborhood Quality
- Health and Environment
- Economy and Employment
- Transportation





# Tailor to H-GAC Needs



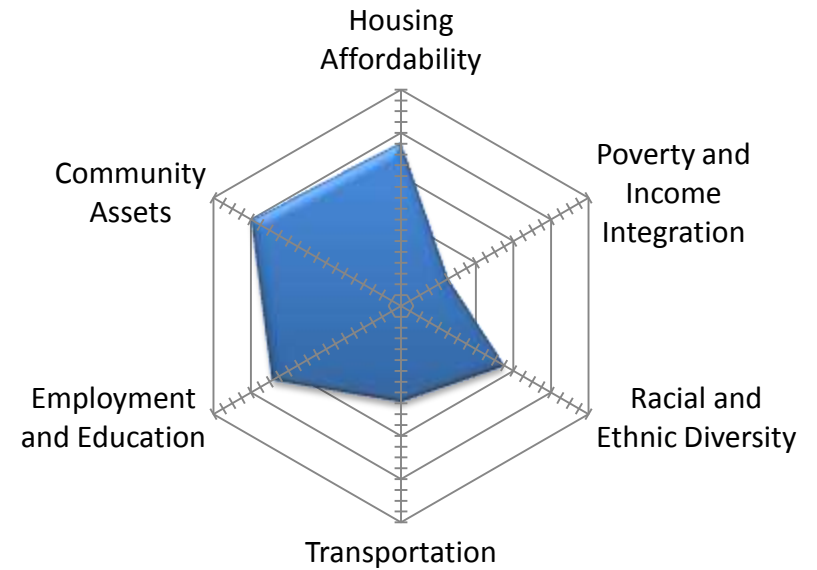
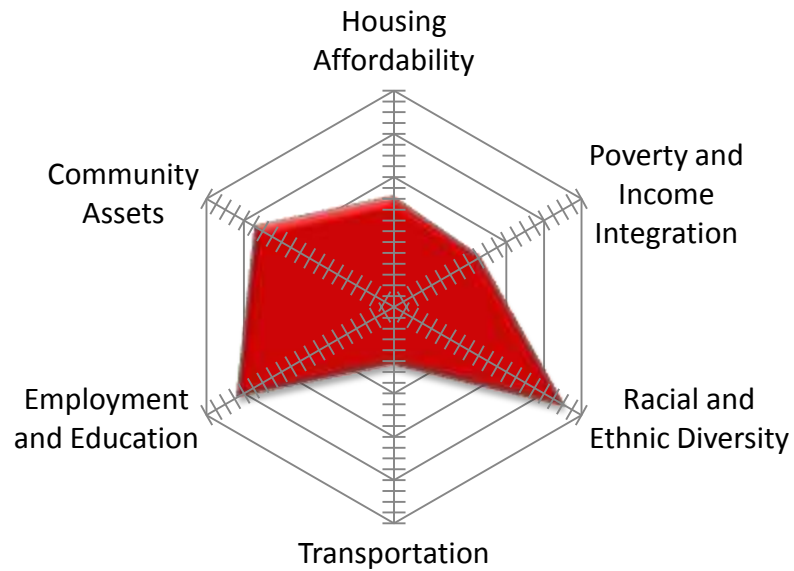
# H-GAC Opportunity Index

## Specific index factors:

- Availability of Affordable Housing
- Households with a mix of incomes
- Low to moderate rates of poverty
- A limited number of high crime areas
- Access to capital for residential investment
- High quality schools
- Employed and educated residents
- Access to fresh food
- Limited Environmental hazards
- Access to transportation options



# Radial Plots

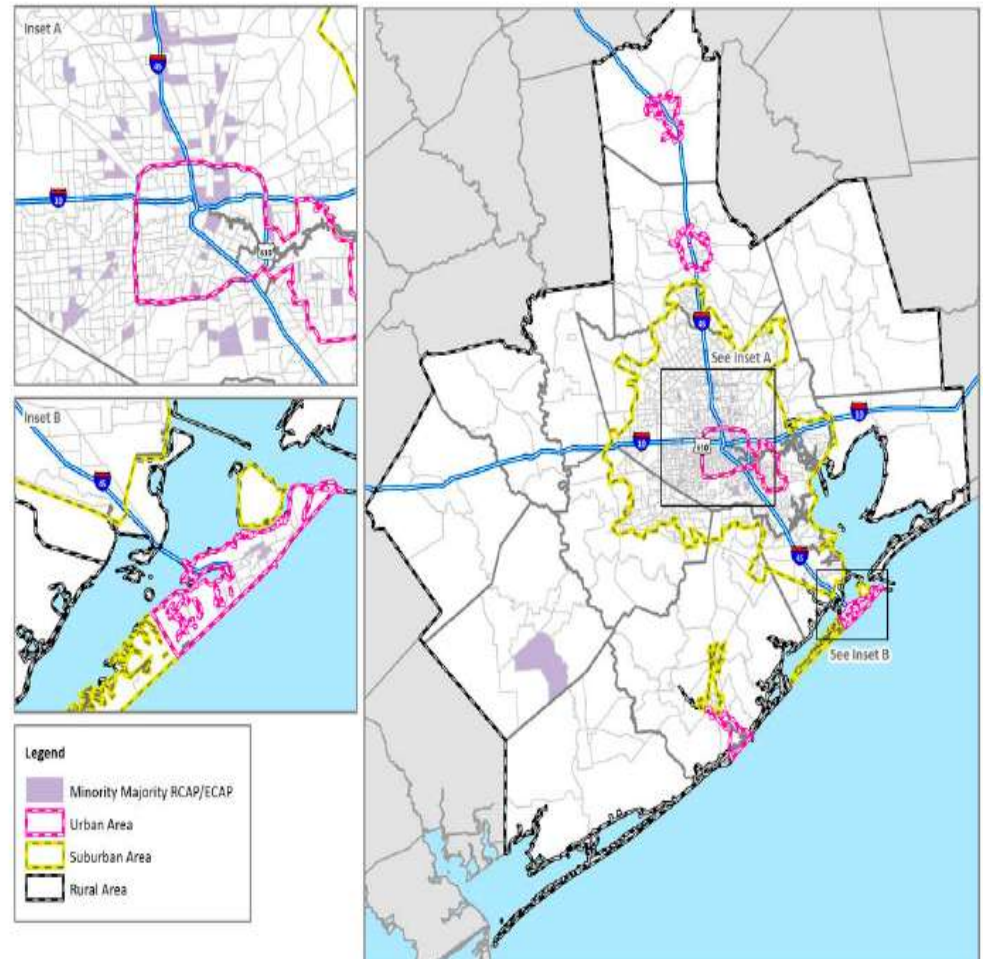


# Data being Examined

- Subsidized Housing
- Racially and Ethnically Concentrated Areas of Poverty
- Educational Quality and Access to Job Training Centers
- Fair Housing Complaint data

Figure II-25.  
RCAPs/ECAPs Based  
on Individual Poverty,  
Houston-Galveston  
Region, 2010

Source:  
2007-2011 ACS and 2010 Census



# Best Practices will address...

- NIMBYism
- Revitalizing communities while limiting gentrification
- Improving the quality of housing stock, especially multi-family units



# What will the document look like?

- I. Executive Summary
- II. Fair Housing Equity Assessment Introduction
- III. Fair Housing Landscape
- IV. Indicators of Opportunity
- V. Access to Opportunity
- VI. Fair Housing Infrastructure
- VII. Best Practices and Recommendations



# What's Next?

Local Feedback

April-May 2013

Draft FHEA

June 2013

FHEA into RPSD

July-Sept 2013

Questions?